

TECHNICAL DESCRIPTION

for the construction of an info center

The project envisages renovation of an existing building that will be converted into an info center room in the future.

LOCATION: The facility is located in the village of Rostuse

INVESTOR: Municipality of Mavrovo - Rostuse

The future repurposed rooms are within the high school "Mavrovo Rostuse". The info center is designed to contain a hallway, main office, kitchen and toilet. The total net usable area of the info center is approximately $Pvk = 41.60m^2$.

Construction, masonry and plaster works

The construction is reinforced concrete with reinforced concrete columns and beams. The walls in the building are made of reinforced walls. The interstorey structures are reinforced concrete slabs. The renovation of the future building consists of:

- Clearing the location (field work).
- Fabrication a cement screed for making ceramic tile floors in all rooms with a thickness of 4 to 6cm. The cement screed is provided above the existing floors.
- Horizontal and vertical waterproofing is provided in the toilet.
- The existing walls are planned to be processed, they will not be demolished but their final processing will be performed.

Processing of walls and ceilings

The interior walls and ceilings in the hallway, the main office and the kitchen are planned to be completely finished with skimming, scraping and painting in two layers.

The ceiling in the toilet is planned to be completely finished with skimming, scraping and painting in two layers. Then make a suspended ceiling.

The ceiling in the main office is planned to be suspended, from gypsum boards $d = 1cm$ with substructure (Knauf system).

Carpentry activities

The project envisages a door for the toilet, the main office and the kitchen. It is planned to procure doors whose choice of color and material will be made in accordance with the Investor.

Ceramic activities

The walls in the toilet are planned to be made of ceramic tiles placed on cement mortar and hydromalflex in full height of the wall, glued with glue for ceramic tiles.

The walls in the kitchen are planned to be made of ceramic tiles placed on cement mortar and hydromalflex at a height of 150cm from the floor, glued with glue for ceramic tiles.

Floors

In the hallway, the main office, the kitchen and the toilet, the floors are planned to be made of ceramic tiles placed on cement mortar with a previous performance of waterproofing in the toilet, glued with a suitable glue for ceramic tiles.

The floor of the walkway terrace in front of the info center is provided by terrazzo tiles placed on a cement screed and glued with terrazzo tile adhesive.

Other activities

It is planned to equip the toilet with a sink, toilet bowl and tap. The office is scheduled to procure desk, office chairs, metal shelving and inverter split air conditioner. Procurement, transport and installation of plywood kitchen elements. The design and color of the plywood should be at the choice of the Investor.

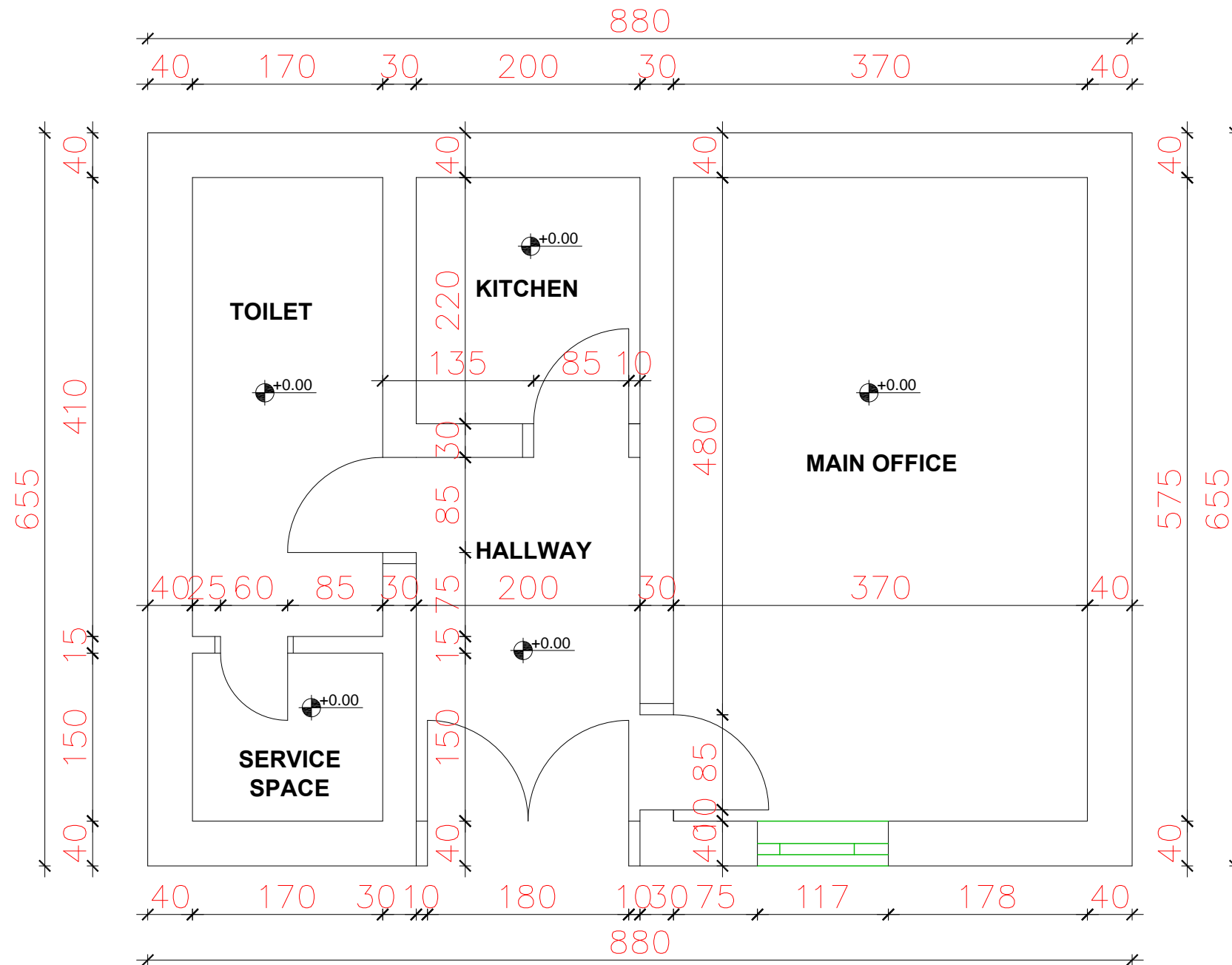
From electricity it is necessary to procure 4 LED panels, 5 sockets, 5 switches, mask for electricity meter in the office, light panel at the entrance. In the office choicen by the Investor should be placed venetian blinds.

Performance

The construction of the building should be according to all technical norms, both in terms of construction and the built-in material.

Compiled by:

Msc. Sead Abazi



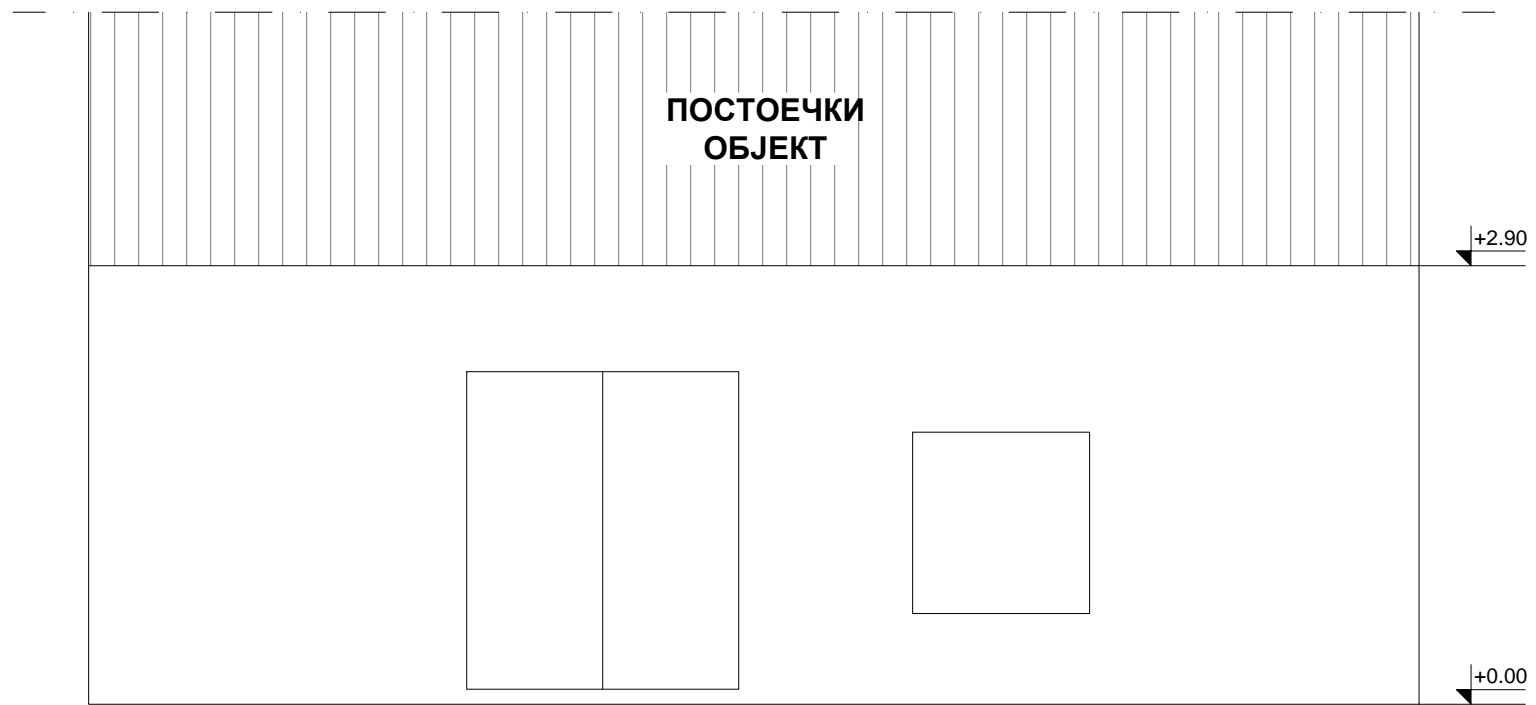
PREMISES	AREA
MAIN OFFICE	21.28m ²
KITCHEN	4.40m ²
HALLWAY	6.34m ²
TOILET	6.97m ²
SERVICE SPACE	2.55m ²

TOTAL NET AREA	41.54m ²
TOTAL GROSS AREA	57.64m ²

GROUND FLOOR LAYOUT

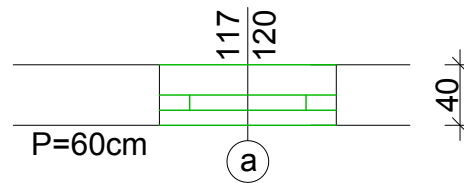
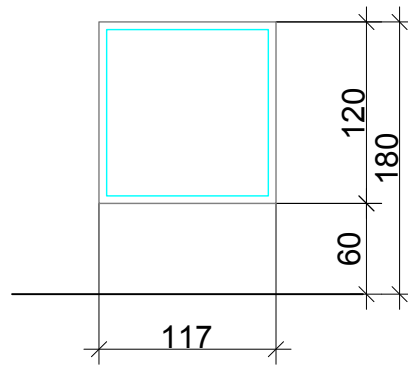
M=1:50

Drawing 1.1



EAST FACADE
M=1:50

Drawing 1.2



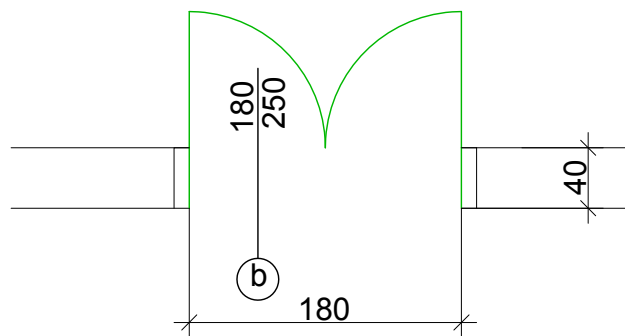
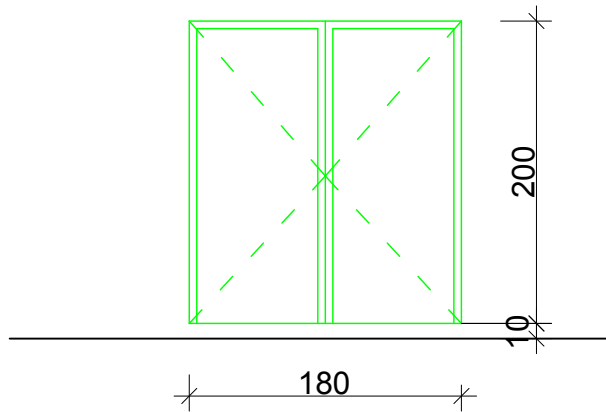
POS.a

1.	masonry measure	117/120
2.	manufacturer	
3.	kind of carpentry	window
4.	material	PVC, white , glass
5.	wall thickness	40cm
6.	full-glazed	glazed-two-layer thermal panel 4 + 12 + 4
7.	hinge	
8.	blinds	
9.	mechanism	
10.	processing	
11.	total pieces	1
12.	setting level	ground floor
13.	note	measures to be checked on the spot!

CARPENTRY SCHEME

M=1:50

Drawing 1.3



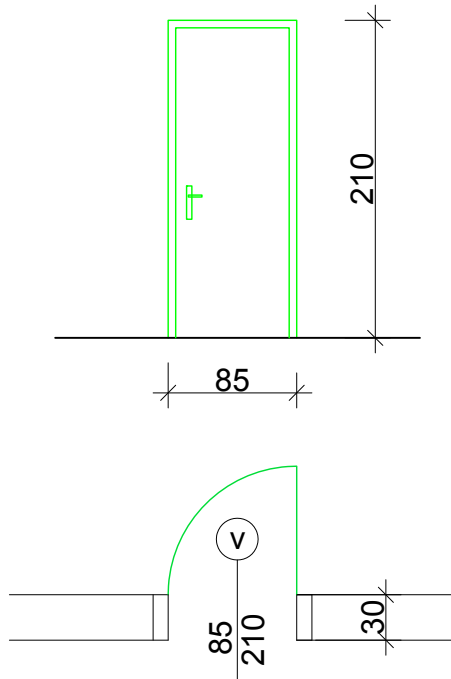
POS.b

1.	masonry measure	180/200
2.	manufacturer	
3.	kind of carpentry	double door
4.	material	PVC, white
5.	wall thickness	40cm
6.	full-glazed	
7.	hinge	
8.	blinds	
9.	mechanism	
10.	processing	
11.	total pieces	1
12.	setting level	ground floor
13.	note	measures to be checked on the spot!

CARPENTRY SCHEME

M=1:50

Drawing 1.4



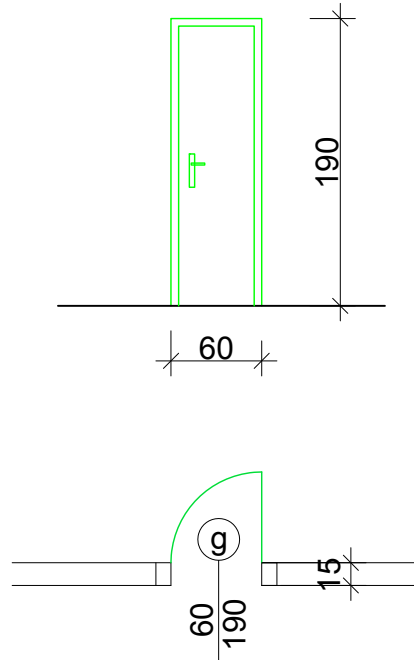
POS.v

1.	masonry measure	85/210
2.	manufacturer	
3.	kind of carpentry	single door
4.	material	wood
5.	wall thickness	30cm
6.	full-glazed	
7.	hinge	
8.	blinds	
9.	mechanism	
10.	processing	
11.	total pieces	3
12.	setting level	ground floor
13.	note	measures to be checked on the spot!

CARPENTRY SCHEME

M=1:50

Drawing 1.5



POS.g

1.	masonry measure	60/190
2.	manufacturer	
3.	kind of carpentry	single door
4.	material	PVC, white
5.	wall thickness	15cm
6.	full-glazed	
7.	hinge	
8.	blinds	
9.	mechanism	
10.	processing	
11.	total pieces	1
12.	setting level	ground floor
13.	note	measures to be checked on the spot!

CARPENTRY SCHEME

M=1:50

Drawing 1.6